



NATURE POWER 2000 WATT INVERTER / CHARGER



Features

Convert battery power to household AC power installation.

- **2000W continuous output**
- **Pure Sinewave output ideal for running demanding motor loads, sensitive electronics and battery rechargeable device!**
- **Multi-stage 55A charger ensures your batteries are recharged safely and efficiently**
- **Runs microwave ovens, coffee makers, refrigerators, freezers and electronics flawlessly**
- **Ideal for RV's, boats, trucks and cabins**



1-800-588-0590

www.naturepowerproducts.com



fb.me/NaturePowerProducts



SPECIFICATIONS

AC OUTPUT

Power: 2000W (Continuous), 4000W(Peak)

Voltage / Current: 120 Vac / 16.6A

Frequency: 60±1Hz

Waveform: Pure Sinewave

AC Outlet: 2 x 3Prong GFCI AC outlet

DC OUTPUT

USB: 1 x 5V/1A

DC INPUT

Voltage (nominal): 12.5Vdc

Operation Range: 10.5-15.5Vdc / 180A

Material: ABS, Stell, Aluminum

PROTECTION:

Input Undervoltage Warning: 11.0±0.3Vdc

Input Undervoltage Shutdown: 10.5±0.3Vdc

Input Undervoltage Recovery: 12.0±0.3Vdc

Input Overvoltage Shutdown: 15.5Vdc

Overload Shutdown: Yes

Output Short circuit Protection: Yes

Over Temperature Shutdown: Yes

SHIPPING DETAILS

Item Number: 38326

UPC Code: 839290003121

Country of Origin: China

Product Dimensions: 9.0 x 18.8 x 4.5 in

Color box Dimensions: 11.2 x 21.5 x 6.6 in

Product Weight: 16 lbs with package

14.5 lbs without package

Master Quantity: -



NATURE POWER 2000 WATT INVERTER / CHARGER

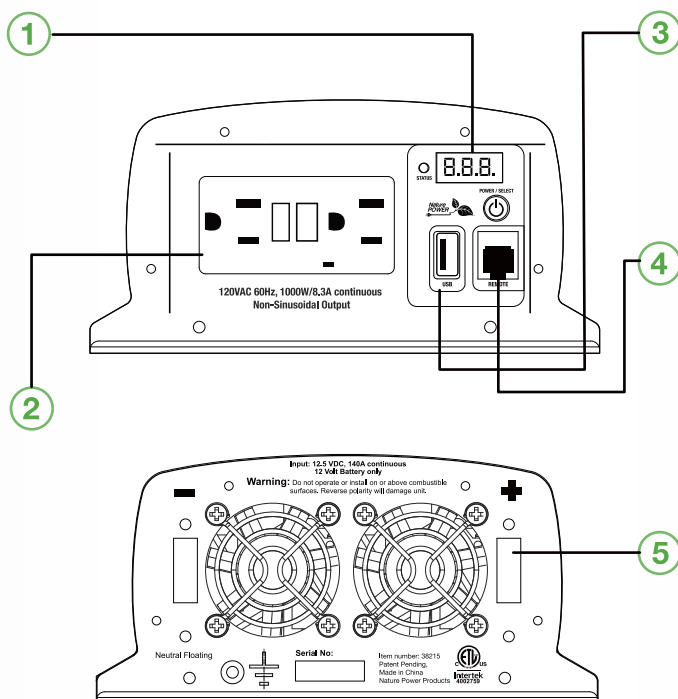
DIGITAL DISPLAY:
Shows the power draw of your load and battery status

USB PORT:
750 mA to charge hand held devices

REMOTE SWITCH PORT:
Use optional remote on/off switch to control unit in a convenient location

GFCI OUTPUT:
Ensures safe 120V/2000W AC output

DC INPUT TERMINALS:
Heavy duty input terminals for battery connections



SPECIFICATIONS

Charger

Charging Voltage Range	14.2 – 15.5 VDC
Floated Voltage Range	13.4 – 13.8 VDC
Charging Control	3 Stages (Bulk/Absorption/Float)
Charger Current (max)	55A
Charger Current Setting	5, 10, 30, 55A Automatic
Equalization Voltage (Flooded battery setting)	16.0 VDC
Efficiency	>80%